

# Hardware & Software R&D Solution Manufacturer



Product Catalog



POE  
solution

Smart  
home

Digital  
signage

Health  
care

Embedded  
Industrial  
Auto

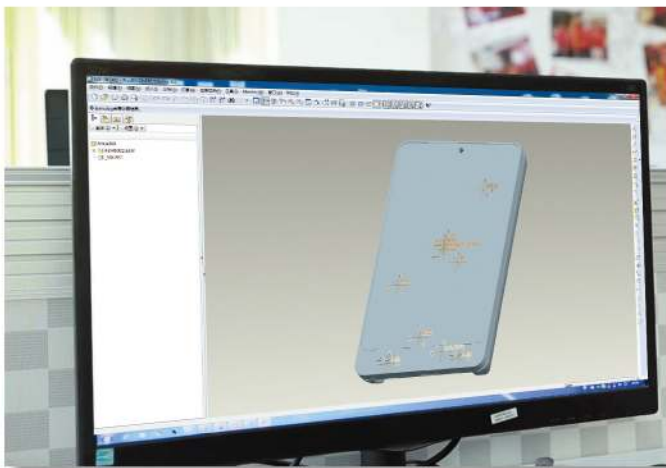
# About Portworld



Founded since 2008 a leading R&D manufacturer of Hardware&Software. With over 20 years of experience in the POE Tablet/Digital Signage/AIO smart Home/Intelligent Retail industry.

Most of the products are designed by our experienced engineers .Portworld products are comprised of high-quality aluminum, ABS and polycarbonate to provide a perfect solution for the customer.

While Portworld began with a vision to create the idea. Portworld Hardware/Software Engineers communicates with customer & make innovative solutions for any application or industry, such as the Hotel, Hospital, Supermarket, Smart home, Treadmill,etc.

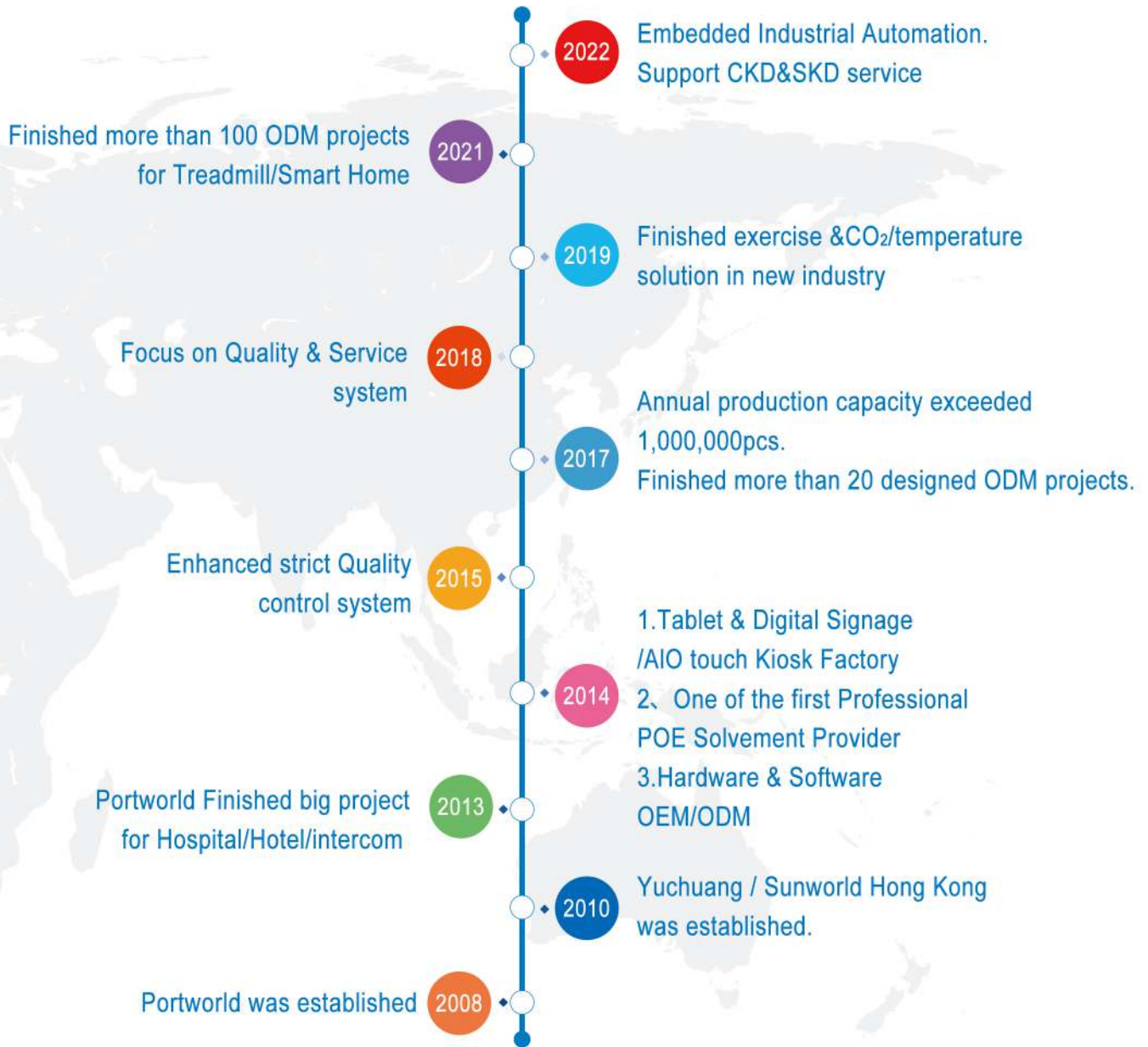


- ID/Mould Design -



- PCBA/Mainboard Production -

# Milestone



- SMT -



- Dust-proof Workshop -

# ▶▶ CONTENTS

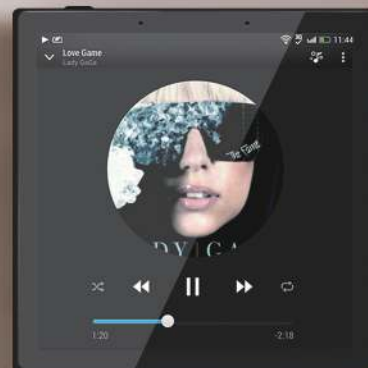
<b>01</b>	• Smart Home Touch Control Panel	04~07
<b>02</b>	• Wall Mount POE Tablet	08~15
<b>03</b>	• Embedded Industrial Monitor	16~18
<b>04</b>	• LED Meeting Room Tablet	19
<b>05</b>	• L Type Customer Feedback Device	20~21
<b>06</b>	• Rugged Tablet	22
<b>07</b>	• Commercial Stretch Bar Display	23
<b>08</b>	• Wall Mount/Floor Standing Advertising Display	24~25
<b>09</b>	• Electronic Wooden Photo Frame	26
<b>10</b>	• R&D Solution (Mould ID/Construction/Hardware&Software)	27~28

## YC-SM04

### 4" Embedded Touch Control Panel



- 4" IPS 480\*480 capacitive touch screen
- Comes with RJ45 port, RS485 serial port, WIFI, Bluetooth, AUX
- RAM 1GB, ROM 8GB, Android 7.1
- Installed with Type 86 Wall Switch Socket
- Dimension : 86.6mm\*86.6mm\*35.3mm



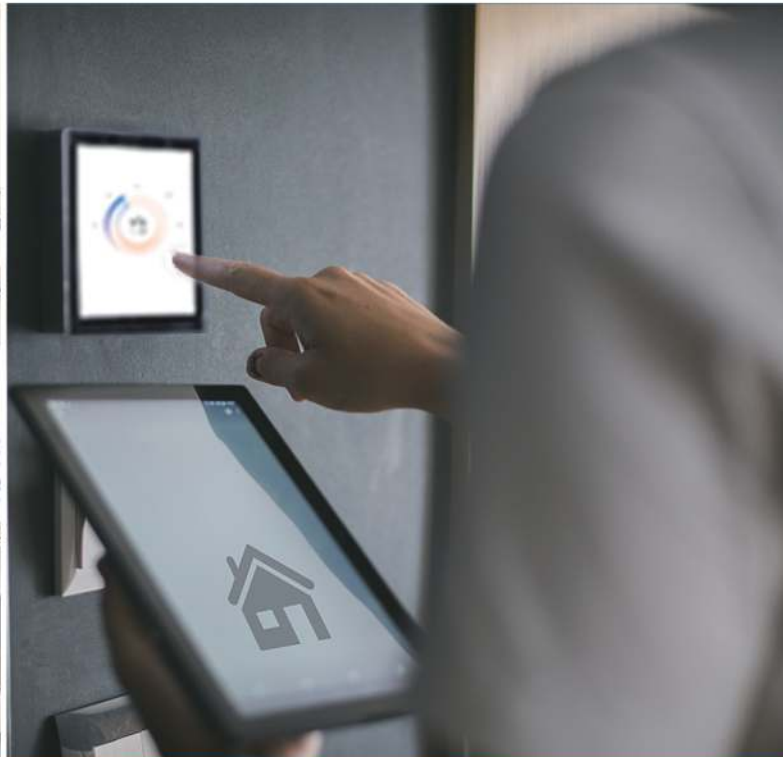
Control room

## YC-SM06E

### 4" Embedded Touch Control Panel (Tuya Zigbee option)

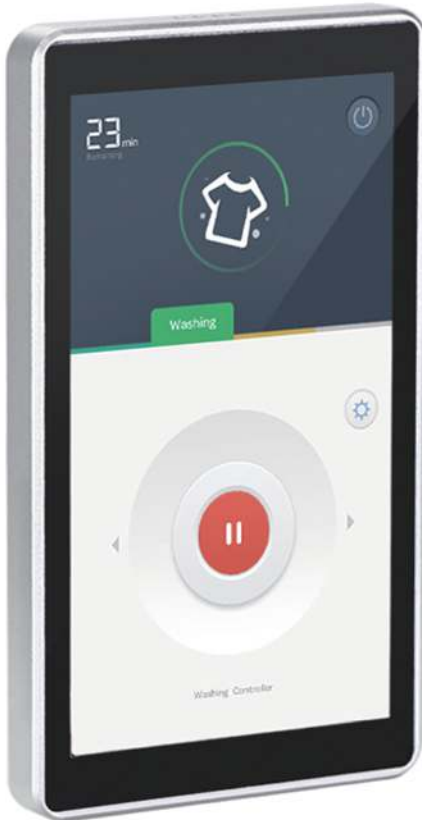


- PX30 Quad-core cortex-A35, 1.5Ghz
- RAM 2GB, ROM 8GB, Android 8.1
- Comes with RJ45 port, RS485 serial port, Neutral/Live wire/Relays output
- Network: WiFi, Bluetooth, POE (optional)
- Dimension: 86mm\*86mm\*37mm



# YC-SM55P

## 5.5" POE Touch Control Panel



- RK3566 Quad-core cortex-A55, 1.8Ghz
- Comes with POE RJ45 port, DC port, Type C port, SD card slot, RS485 serial port
- RAM 2GB, ROM 16GB, Android 11
- Resolution: 720\*1280
- Dimension: 145.7mm\*84mm\*11mm
- Material: Metal



## Smart home



# YC-SM08P

## 8" Smart Home Touch Control Panel



- RK3566 Quad-core
- RAM 2GB, ROM 16GB, Android 11
- Comes with TF card slot, Type-C RJ45, RS485, DC 12V-24V
- Support WiFi, Bluetooth, Ethernet



86 Type Wall Box



EU Type Wall Box



US Type Wall Box

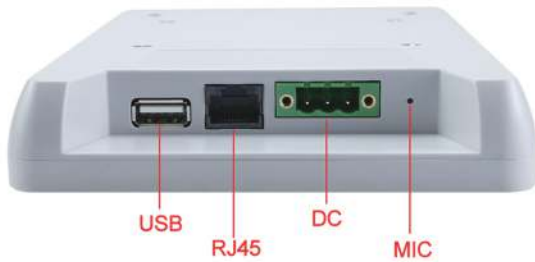


Applied to bank , smart home ,supermarket , hotel ,etc



# YC-83P

## 8" Android POE Tablet



- RK3128/RK3288/RK3399/RK3566/RK3568 Quad-core
- Android 6.0/7.1/8.1/9/10/11
- 8" touch screen 800\*1280 pixel
- RJ45 with POE
- Support WiFi, Bluetooth, Ethernet



## YC-68P RJ11 / RJ45

### 7inch wall mount POE tablet



- RK3128/RK3288/RK3566/ RK3568/RK3399 CPU option
- Android 6.0/7.1/8.1/9/10/11
- 7 inch Touch Screen  
800\*1280 pixel
- RJ11 /POE RJ45
- Support WIFI ,Bluetooth , Ethernet

Applied to bank , smart home ,supermarket , hotel ,etc

## YC-102P

.....  
10" IPS Touch screen POE tablet



- CPU :RK3128/RK3288/RK3399/  
RK3566/RK3568
- Android :6.0/7.1/8.1/9/10/11
- Brightness :**500 nit**
- Resolution :1280x800
- POE RJ45 Port
- Strict quality control



## YC-NT Series

10.1"/15.6"-32" Wall mount POE advertising player



YC-1020NT  
(4G/Battery Option)

- RK3288/RK3566/RK3399/RK3568
- 2GB/4GB RAM, 16GB/32GB ROM Android 8.1/9/10/11
- RJ45 for POE
- Different CPU Brand
- Applied to Smart home ,Advertising display , Hospital,Bus ,Taxi .....

Rockchip

intel

Qualcomm  
snapdragon



Front speaker

15.6" 18.5" 21.5" 27" 32" Option

# YC-1011

## 10" Healthcare Aluminum Case POE Tablet



- Outlook Aluminum Case design
- CPU : RK3128
- Android 5.1/7.1
- Resolution : 1280\*800
- POE RJ45 Port
- Applied to Medical application



## YC-1209

### 12" IPS touch screen POE Tablet



- IPS touch screen option
- CPU : A64/RK3288/RK3399/RK3566/RK3568
- Android 6.0 /7.1 /8.1/9/10/11
- Resolution : 1280\*800
- Network: WIFI ,Ethernet
- Applied to POS System



YC-1209

### Binocular Live Detection Camera



YC-152R

## YC-H/series

10"~21.5" touch screen POE all in one



- RK3288/RK3399/RK3566/RK3568 CPU Option
- Android 6.0/7.1/8.1/9/10/11
- 10-Point capacitive IPS touch panel
- Widely used in treadmill, industrial control, medical, elevator/hotel/shopping mall



# YC-T/series

10"~32" IPS touch screen POE all in one



- 1GB/2GB/4GB RAM,8GB/16GB/32GB ROM Android 6.0/7.1.2/8.1/9/10/11
- RK3288/RK3399/RK3566/RK3568
- VESA :75\*75/100\*100
- Applied in Hotel,supermarket,station,POS,Treadmill,etc



Camera 2.0/5.0



3288/3399 Fast Running



NFC or RFID Meet your needs



Touch panel



Android 6.0/7.1/8.1



POE power supply (Optional)



USB

RJ45

USB



# EB/EBT series



## 7" - 21.5" Embedded Industrial Automation with Metal Case



(EB series)

- RK3288/RK3566/RK3568 2+16G
- Android 7.1/8.1/9/10/11
- 500 cdm2
- POE RJ45 Standard(POE option)
- 1280\*800
- IPS screen



- 10 point capacitive touch screen
- 300 cdm2
- With HDMI VGA DVI port
- 1920\*1080
- Support Windows; Linux; Raspberry Pi; Android



(EBT series)



## EM/EMT Series

10" - 21.5" Embedded Fully Enclosed/Semi-Enclosed Touch Monitor  
(Windows/Android)



Fully Enclosed



Semi-Enclosed

- Front panel IP65 protection
- 10-point capacitive touch
- Semi-enclosed design / fully enclosed fanless and dust-proof design
- RK3288/RK3399/RK3566/RK3568 motherboard option, Operating system supports Android 7.1/8.1/9.0/10/11
- Standard Intel J1900CPU, can upgrade i3/i5/i7. RAM 2GB/4GB/8GB, hard disk 32GB/64GB/128GB/256GB/512GB/1T, Windows 7/10/Linux OS

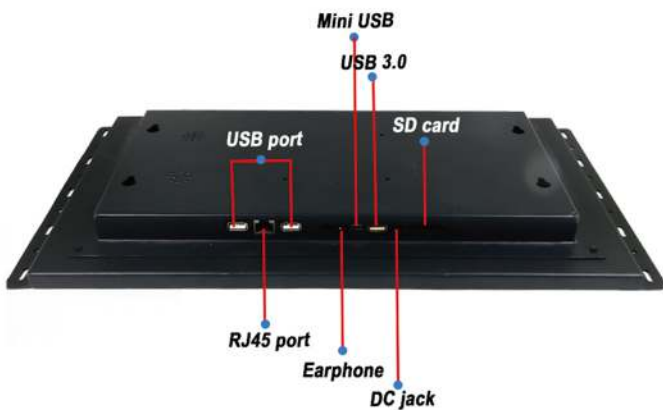


## FT Series

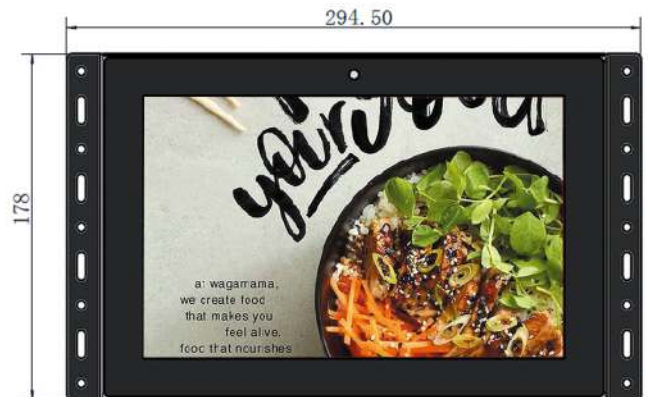
10.1" to 32" Frameless Embedded Solution



- RK3128/RK3288/RK3566/
- RK3568/RK3399
- Android 6.0/ 7.1/8.1/9/10/11
- 1280\* 800 Resolution
- POE RJ 45 Port
- 500NIT Brightness



Touch screen option



YC-102F/YC-102FT

# LED Meeting Room Tablet

10.1" 13.3" 15.6" Wall Mount Meeting Room POE Tablet



Two Sides LED Light Bar

- RK3288/RK3566/RK3568 Optional
- 2+16G, android 8.1/9/10/11
- NFC Chips option
- RFID-Read function option
- RFID-Read +write function option



Four sides LED Light Bar



Payment



Attendance



Access control



# L Type Customer Feedback Device

8"-15.6" desktop player



YC-109R

8" L-Shape

- RK3128/RK3288/RK3566/RK3568
- Battery Option
- IPS touch panel
- Customer feedback ,Video play .



L-Shape

## YC-72D/102DM

- 7" wall mount POE tablet with 2D scanner
- 10" wall mount POE tablet with 2D scanner & NFC



- RK3128/RK3288/RK3566/RK3568
- Touch screen LCD panel
- 1280\* 800 resolution
- POE RJ45 port
- Front 2D scanner
- Front RFID

Retailers use , supermarket shelf price checking , industry Automation

# YC-1801B

## 8" Android Rugged Tablet with NFC

### Optional Functions

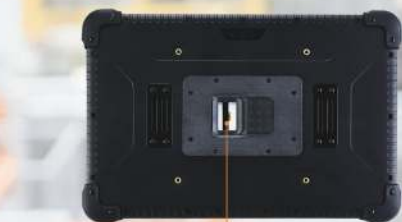


- Iris recognition 
- RFID(LF/HF/UHF) 
- Binocular Dynamic Face Recognition 
- 2D Scanner 
- NB LORA 
- Fingerprint sensor 
- POE 
- PASM encryption card 

- CPU options:
  - Option 1: MTK6761 Quad-core, 2GB+32GB, Android 9, NFC by default.
  - Option 2: MTK6762 2.0Ghz, 4G+64GB, Android 9, NFC by default.
  - Option 3: MTK8788 2.3Ghz, 4GB+64GB, Android 11, NFC by default.
- 8" IPS 1280\*800 capactive touch screen
- Comes with Type C port, SIM card slot, TF card slot, USB, Earphone jack
- Network: WiFi, Bluetooth, 4G Phone calling

### Fingerprint Module Option

#### FAP20 Fingerprint



#### FAP30 IB Fingerprint



# Commercial Stretch Bar Display

3.9"-86" customized size



- RK3288/RK3566/RK3568/PX30/RK3399 Optional
- 2GB+16GB/4GB+32GB Optional
- Android 5.1/6.0/7.1/8.1/9/10/11
- Support OEM and ODM
- LAN/WIFI
- Horizontal / Vertical Installation





## Floor standing digital signage

32" 43" 47" 50" 57" 65" customized size



Silver



black

- RK3288 2G+16G/RK3399 4+32G
- WIFI/LAN internet
- APP installation
- **Metal frame**
- Widely used in: shopping mall ,hospital,hotel , office building ,airport,exhibition hall ...



## Metal Frame Series

10"-65" Metal frame advertising player

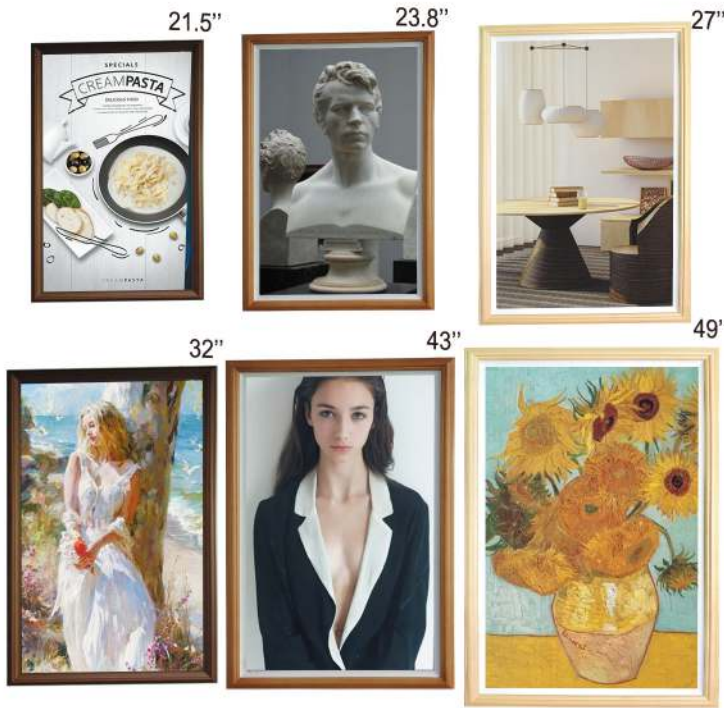


- Android / Windows System
- Metal Frame
- IPS touch panel
- Windows Series Port ( Intel Chip)



# Electronic photo frame Display

21.5" - 49" **Wooden** Electronic Photo Frame

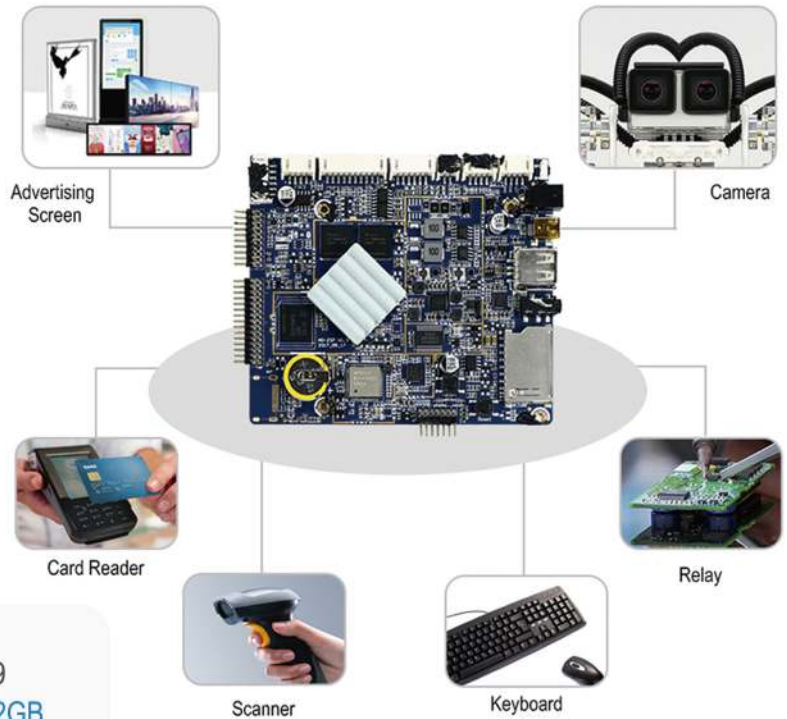
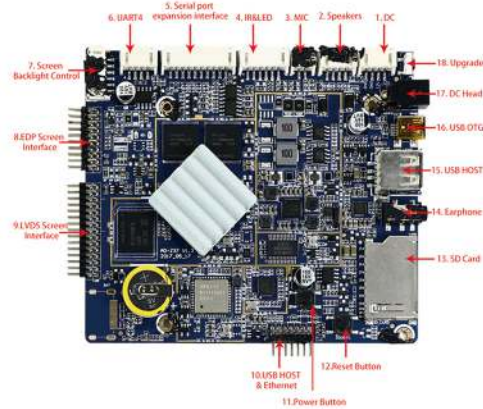


- 21.5" - 49"
- Play Video /Picture
- Remote control via APP or Server
- Applied to home,office ,store , museum,etc



# CKD/SKD Supply Chain

## Motherboards Solution



- Various motherboard options: PX30/RK3128/RK3288/RK3566/RK3568/RK3399
- Memory: Support 1GB+8GB/2GB+16GB/4GB+32GB
- Provide API interface debugging code, support app secondary development
- Application: smart home, smart commercial display, smart retail, industrial automation, security access control, etc.



YC-K10



YC-Z37



YC-A99



YC-A68

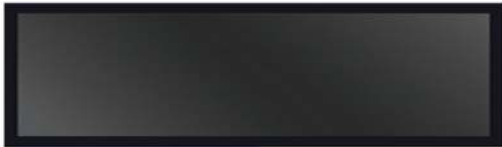


# CKD/SKD Supply Chain

## LCD Screen & Touch Panel Solution



- LCD screen size options: 4"-32" etc.
- Resolution options:
  - 1920\*1200/1920\*1080/1280\*800/1024\*600/720\*1280 etc.
- Screen interface: Mipi, Lvds, Edp
- Screen brand: BOE, Samsung, LG



## CKD Accessories More Options



Motherboard



LCD screen



Capacitive touch panel



Speaker



Cable



Wifi antenna



el Lockers  
Free 24/7

manage your parcel

ct

n



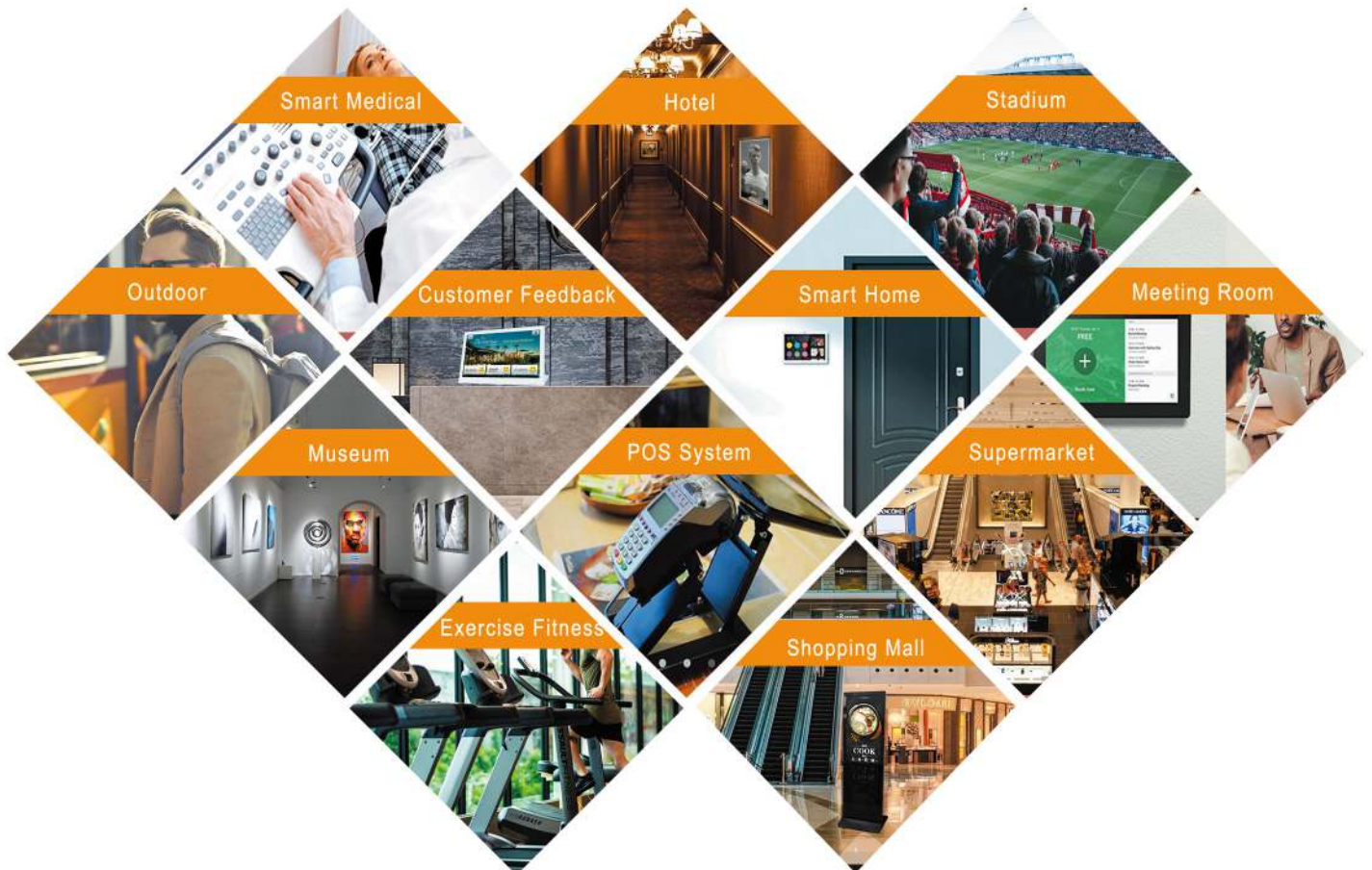


# ODM Service

Professional R&D team customization design.

## Development Schedule:

PCBA Design		Tooling Design	
Specs confirmed	7 days	ID sample	7 days
SCH Layout	9 days	3D sample	10 days
PCBA T0	25 days	Tooling T0	30 days
PCBA T1	25 days	Tooling T1	15 days
		Trial production	30 days
		Mass production	30 days



# CERTIFICATES

VERIFICATION-ПРОБЕРКА-検証-VERIFICATION-검증

## Verification of Conformity

Certificate No. CTL171988714-CC

Applicant: Shenzhen Yuhuang Xingye Technology Co. Ltd  
 Floor 2, No. 14 White Central Road, Longgang District, Shenzhen, Guangdong, China

Product: POE Healthcare Incentration Terminal

Trademark: N/A

Model(s): YC-1802, YC-1801P, YC-1802P, YC-1802E, YC-1802W, YC-1182, YC-1806, YC-1803, YC-48P1, YC-48P, YC-48V

Manufacturer: Shenzhen Yuhuang Xingye Technology Co. Ltd  
 Address: Floor 2, No. 14 White Central Road, Longgang District, Shenzhen, Guangdong, China

Test Report: CTL171988714-E

Complies with the requirements of the IEC 60629:2014/EN 60629:2014 test standard:

EN 60629:2014  
 EN 60629:2014/A1:2015  
 EN 60629:2-2014  
 EN 60629:2-2015

Remarks: Based on the voluntary assessment of the product sample and technical file, we confirm that the above-mentioned product meets the requirements of the IEC directive. The CE mark as shown below can be used, under the responsibility of the manufacturer or the importer, after completion of an EC declaration of conformity and compliance with all relevant EC directives.

Shenzhen CTL Testing Technology Co., Ltd.  
 4th Floor, 14 White Central Road, Longgang District, Shenzhen, China 518108  
 Telephone: +86-755-85001388, Web: www.cctl.com, E-mail: cctl@ctt.com

## Verification of Conformity

14 White Central Road, Longgang District, Shenzhen, Guangdong, China

Product: POE Healthcare Incentration Terminal

Model(s): YC-1802, YC-1801P, YC-1802P, YC-1802E, YC-1802W, YC-1182, YC-1806, YC-1803, YC-48P1, YC-48P, YC-48V

Manufacturer: Shenzhen Yuhuang Xingye Technology Co. Ltd

Address: Floor 2, No. 14 White Central Road, Longgang District, Shenzhen, Guangdong, China

Test Report: CTL171988714-E

Complies with the requirements of the IEC 60629:2014/EN 60629:2014 test standard:

EN 60629:2014  
 EN 60629:2014/A1:2015  
 EN 60629:2-2014  
 EN 60629:2-2015

Remarks: Based on the voluntary assessment of the product sample and technical file, we confirm that the above-mentioned product meets the requirements of the IEC directive. The CE mark as shown below can be used, under the responsibility of the manufacturer or the importer, after completion of an EC declaration of conformity and compliance with all relevant EC directives.

Shenzhen CTL Testing Technology Co., Ltd.  
 4th Floor, 14 White Central Road, Longgang District, Shenzhen, China 518108  
 Telephone: +86-755-85001388, Web: www.cctl.com, E-mail: cctl@ctt.com

## CERTIFICATE of Conformity

Reference No.: HCC219885105R

Applicant: Shenzhen Yuhuang Xingye Technology Co., Ltd

Address: Floor 2, 14th White Central Road, Baotian Street, Longgang district, Shenzhen

Sample Name: Tablet

Trade Mark: N/A

Test Item No.: YC-4820

Bylar Item No.: YC-4830, YC-48P, YC-1802, YC-1802E, YC-1801, YC-1806, YC-182H, YC-182E, YC-182W, YC-182Y, YC-182Z, YC-182A, YC-182B, YC-182C, YC-182D, YC-182E, YC-182F, YC-182G, YC-182H, YC-182I, YC-182J, YC-182K, YC-182L, YC-182M, YC-182N, YC-182O, YC-182P, YC-182Q, YC-182R, YC-182S, YC-182T, YC-182U, YC-182V, YC-182W, YC-182X, YC-182Y, YC-182Z

The submitted products have been tested by us with the listed standards and found in compliance with the following European Directives:

The RoHS Directive 2011/65/EU and its amendment directive 2015/863/EU  
 IEC 62321-1:2013 IEC 62321-1:2015 IEC 62321-1:2017 IEC 62321-1:2017 CSV  
 IEC 62321-4:2015 IEC 62321-4:2015 IEC 62321-4:2017 IEC 62321-4:2017 CSV

The tests were performed in normal operation mode. This test results apply only to the particular sample tested and to the specific body concerned. This certificate applies specifically to the sample investigated in its test reference number only.

The RoHS markings as shown below can be affixed on the product after preparation of necessary technical documentation.

Other relevant Directives have to be obtained.

## RoHS

Date of Issue: September 12, 2019

Shenzhen HCC Testing Technology Co., Ltd.  
 14 White Central Road, Longgang District, Shenzhen, China 518108  
 Telephone: +86-755-85001388, Web: www.hcc.com, E-mail: hcc@hcc.com

## CERTIFICATE of Conformity

2014/53/EU Restriction of Hazardous Substances

Reference No.: LCSD420429015

Applicant: Shenzhen Yuhuang Xingye Technology Co., Ltd

Address: Floor 2, 14th White Central Road, Baotian Street, Longgang district, Shenzhen

Sample Name: Tablet

Trade Mark: N/A

Test Item No.: YC-4820

Bylar Item No.: YC-4830, YC-48P, YC-1802, YC-1802E, YC-1801, YC-1806, YC-182H, YC-182E, YC-182W, YC-182Y, YC-182Z, YC-182A, YC-182B, YC-182C, YC-182D, YC-182E, YC-182F, YC-182G, YC-182H, YC-182I, YC-182J, YC-182K, YC-182L, YC-182M, YC-182N, YC-182O, YC-182P, YC-182Q, YC-182R, YC-182S, YC-182T, YC-182U, YC-182V, YC-182W, YC-182X, YC-182Y, YC-182Z

The submitted products have been tested by us with the listed standards and found in compliance with the following European Directives:

The RoHS Directive 2011/65/EU and its amendment directive 2015/863/EU  
 IEC 62321-1:2013 IEC 62321-1:2015 IEC 62321-1:2017 IEC 62321-1:2017 CSV  
 IEC 62321-4:2015 IEC 62321-4:2015 IEC 62321-4:2017 IEC 62321-4:2017 CSV

The tests were performed in normal operation mode. This test results apply only to the particular sample tested and to the specific body concerned. This certificate applies specifically to the sample investigated in its test reference number only.

The RoHS markings as shown below can be affixed on the product after preparation of necessary technical documentation.

Other relevant Directives have to be obtained.

## RoHS

Date of Issue: September 12, 2019

Shenzhen HCC Testing Technology Co., Ltd.  
 14 White Central Road, Longgang District, Shenzhen, China 518108  
 Telephone: +86-755-85001388, Web: www.hcc.com, E-mail: hcc@hcc.com

## United States of America

Patent and Trademark Office

## PORTWORLD

Shenzhen Yuhuang Xingye Technology Co., Ltd

Address: Floor 2, 14th White Central Road, Baotian Street, Longgang district, Shenzhen

Sample Name: Tablet

Trade Mark: N/A

Test Item No.: YC-4820

Bylar Item No.: YC-4830, YC-48P, YC-1802, YC-1802E, YC-1801, YC-1806, YC-182H, YC-182E, YC-182W, YC-182Y, YC-182Z, YC-182A, YC-182B, YC-182C, YC-182D, YC-182E, YC-182F, YC-182G, YC-182H, YC-182I, YC-182J, YC-182K, YC-182L, YC-182M, YC-182N, YC-182O, YC-182P, YC-182Q, YC-182R, YC-182S, YC-182T, YC-182U, YC-182V, YC-182W, YC-182X, YC-182Y, YC-182Z

The submitted products have been tested by us with the listed standards and found in compliance with the following European Directives:

The RoHS Directive 2011/65/EU and its amendment directive 2015/863/EU  
 IEC 62321-1:2013 IEC 62321-1:2015 IEC 62321-1:2017 IEC 62321-1:2017 CSV  
 IEC 62321-4:2015 IEC 62321-4:2015 IEC 62321-4:2017 IEC 62321-4:2017 CSV

The tests were performed in normal operation mode. This test results apply only to the particular sample tested and to the specific body concerned. This certificate applies specifically to the sample investigated in its test reference number only.

The RoHS markings as shown below can be affixed on the product after preparation of necessary technical documentation.

Other relevant Directives have to be obtained.

## RoHS

Date of Issue: September 12, 2019

Shenzhen HCC Testing Technology Co., Ltd.  
 14 White Central Road, Longgang District, Shenzhen, China 518108  
 Telephone: +86-755-85001388, Web: www.hcc.com, E-mail: hcc@hcc.com

## IEC SYSTEM OF MUTUAL RECOGNITION OF TEST CERTIFICATES FOR ELECTRICAL EQUIPMENT (PRED) IN SCHEME

### CE TEST CERTIFICATE

Product: POE Healthcare Incentration Terminal

Applicant: Shenzhen Yuhuang Xingye Technology Co., Ltd

Address: Floor 2, 14th White Central Road, Baotian Street, Longgang district, Shenzhen

Sample Name: Tablet

Trade Mark: N/A

Test Item No.: YC-4820

Bylar Item No.: YC-4830, YC-48P, YC-1802, YC-1802E, YC-1801, YC-1806, YC-182H, YC-182E, YC-182W, YC-182Y, YC-182Z, YC-182A, YC-182B, YC-182C, YC-182D, YC-182E, YC-182F, YC-182G, YC-182H, YC-182I, YC-182J, YC-182K, YC-182L, YC-182M, YC-182N, YC-182O, YC-182P, YC-182Q, YC-182R, YC-182S, YC-182T, YC-182U, YC-182V, YC-182W, YC-182X, YC-182Y, YC-182Z

The submitted products have been tested by us with the listed standards and found in compliance with the following European Directives:

The RoHS Directive 2011/65/EU and its amendment directive 2015/863/EU  
 IEC 62321-1:2013 IEC 62321-1:2015 IEC 62321-1:2017 IEC 62321-1:2017 CSV  
 IEC 62321-4:2015 IEC 62321-4:2015 IEC 62321-4:2017 IEC 62321-4:2017 CSV

The tests were performed in normal operation mode. This test results apply only to the particular sample tested and to the specific body concerned. This certificate applies specifically to the sample investigated in its test reference number only.

The RoHS markings as shown below can be affixed on the product after preparation of necessary technical documentation.

Other relevant Directives have to be obtained.

## RoHS

Date of Issue: September 12, 2019

Shenzhen HCC Testing Technology Co., Ltd.  
 14 White Central Road, Longgang District, Shenzhen, China 518108  
 Telephone: +86-755-85001388, Web: www.hcc.com, E-mail: hcc@hcc.com

## 专利证书

Shenzhen Yuhuang Xingye Technology Co., Ltd

Address: Floor 2, 14th White Central Road, Baotian Street, Longgang district, Shenzhen

Sample Name: Tablet

Trade Mark: N/A

Test Item No.: YC-4820

Bylar Item No.: YC-4830, YC-48P, YC-1802, YC-1802E, YC-1801, YC-1806, YC-182H, YC-182E, YC-182W, YC-182Y, YC-182Z, YC-182A, YC-182B, YC-182C, YC-182D, YC-182E, YC-182F, YC-182G, YC-182H, YC-182I, YC-182J, YC-182K, YC-182L, YC-182M, YC-182N, YC-182O, YC-182P, YC-182Q, YC-182R, YC-182S, YC-182T, YC-182U, YC-182V, YC-182W, YC-182X, YC-182Y, YC-182Z

The submitted products have been tested by us with the listed standards and found in compliance with the following European Directives:

The RoHS Directive 2011/65/EU and its amendment directive 2015/863/EU  
 IEC 62321-1:2013 IEC 62321-1:2015 IEC 62321-1:2017 IEC 62321-1:2017 CSV  
 IEC 62321-4:2015 IEC 62321-4:2015 IEC 62321-4:2017 IEC 62321-4:2017 CSV

The tests were performed in normal operation mode. This test results apply only to the particular sample tested and to the specific body concerned. This certificate applies specifically to the sample investigated in its test reference number only.

The RoHS markings as shown below can be affixed on the product after preparation of necessary technical documentation.

Other relevant Directives have to be obtained.

## RoHS

Date of Issue: September 12, 2019

Shenzhen HCC Testing Technology Co., Ltd.  
 14 White Central Road, Longgang District, Shenzhen, China 518108  
 Telephone: +86-755-85001388, Web: www.hcc.com, E-mail: hcc@hcc.com

## TEST REPORT

Medical electrical equipment  
 General requirements for basic safety and essential performance

Reference No.: CTL171988714-CC

Applicant: Shenzhen Yuhuang Xingye Technology Co., Ltd

Address: Floor 2, 14th White Central Road, Baotian Street, Longgang district, Shenzhen

Sample Name: Tablet

Trade Mark: N/A

Test Item No.: YC-4820

Bylar Item No.: YC-4830, YC-48P, YC-1802, YC-1802E, YC-1801, YC-1806, YC-182H, YC-182E, YC-182W, YC-182Y, YC-182Z, YC-182A, YC-182B, YC-182C, YC-182D, YC-182E, YC-182F, YC-182G, YC-182H, YC-182I, YC-182J, YC-182K, YC-182L, YC-182M, YC-182N, YC-182O, YC-182P, YC-182Q, YC-182R, YC-182S, YC-182T, YC-182U, YC-182V, YC-182W, YC-182X, YC-182Y, YC-182Z

The submitted products have been tested by us with the listed standards and found in compliance with the following European Directives:

The RoHS Directive 2011/65/EU and its amendment directive 2015/863/EU  
 IEC 62321-1:2013 IEC 62321-1:2015 IEC 62321-1:2017 IEC 62321-1:2017 CSV  
 IEC 62321-4:2015 IEC 62321-4:2015 IEC 62321-4:2017 IEC 62321-4:2017 CSV

The tests were performed in normal operation mode. This test results apply only to the particular sample tested and to the specific body concerned. This certificate applies specifically to the sample investigated in its test reference number only.

The RoHS markings as shown below can be affixed on the product after preparation of necessary technical documentation.

Other relevant Directives have to be obtained.

## RoHS

Date of Issue: September 12, 2019

Shenzhen HCC Testing Technology Co., Ltd.  
 14 White Central Road, Longgang District, Shenzhen, China 518108  
 Telephone: +86-755-85001388, Web: www.hcc.com, E-mail: hcc@hcc.com

## Test Report

Compatibility of multimedia equipment - Emission  
 Requirements  
 Harmonized technical specification - Emission characteristics - Limits and methods of measurement

Reference No.: CTL171988714-CC

Applicant: Shenzhen Yuhuang Xingye Technology Co., Ltd

Address: Floor 2, 14th White Central Road, Baotian Street, Longgang district, Shenzhen

Sample Name: Tablet

Trade Mark: N/A

Test Item No.: YC-4820

Bylar Item No.: YC-4830, YC-48P, YC-1802, YC-1802E, YC-1801, YC-1806, YC-182H, YC-182E, YC-182W, YC-182Y, YC-182Z, YC-182A, YC-182B, YC-182C, YC-182D, YC-182E, YC-182F, YC-182G, YC-182H, YC-182I, YC-182J, YC-182K, YC-182L, YC-182M, YC-182N, YC-182O, YC-182P, YC-182Q, YC-182R, YC-182S, YC-182T, YC-182U, YC-182V, YC-182W, YC-182X, YC-182Y, YC-182Z

The submitted products have been tested by us with the listed standards and found in compliance with the following European Directives:

The RoHS Directive 2011/65/EU and its amendment directive 2015/863/EU  
 IEC 62321-1:2013 IEC 62321-1:2015 IEC 62321-1:2017 IEC 62321-1:2017 CSV  
 IEC 62321-4:2015 IEC 62321-4:2015 IEC 62321-4:2017 IEC 62321-4:2017 CSV

The tests were performed in normal operation mode. This test results apply only to the particular sample tested and to the specific body concerned. This certificate applies specifically to the sample investigated in its test reference number only.

The RoHS markings as shown below can be affixed on the product after preparation of necessary technical documentation.

Other relevant Directives have to be obtained.

## RoHS

Date of Issue: September 12, 2019

Shenzhen HCC Testing Technology Co., Ltd.  
 14 White Central Road, Longgang District, Shenzhen, China 518108  
 Telephone: +86-755-85001388, Web: www.hcc.com, E-mail: hcc@hcc.com

## RADIO TEST REPORT

FCC ID: 2AU5UYC-112P

Product: Tablet

Trade Mark: Sunmold Technology Limited

Model No.: YC-112P

Family Model: YC-102P, YC-88P, YC-101I, YC-120E, YC-132H, YC-152H, YC-182H, 215H, YC-1301T, YC-1561T, YC-1851T, YC-1911T

Report No.: S19041203522001

Issue Date: 20 Nov 2019


Prepared for: Sunmold Technology Limited  
 14th White Central Road, Baotian Street, Longgang District, Shenzhen, Guangdong, China


Prepared by: Shenzhen NTEK Testing Technology Co., Ltd  
 Jidong E. Fonda Science Park, Sanwei Community, Street Bao'an District, Shenzhen 518126 P.R. China  
 Tel.: +86-755-8115 6588  
 Fax: +86-755-8115 6599  
 Website: http://www.ntek.org.cn




***PORTWORLD***

**(Portworld)Sunworld Technology Co., LTD**

 +86-15818792594

 jonneyjs\_wang.163.com

 +86-755-8278 1960

 jonney@ycxytech.com

 [www.portworld-solu.com](http://www.portworld-solu.com)

